

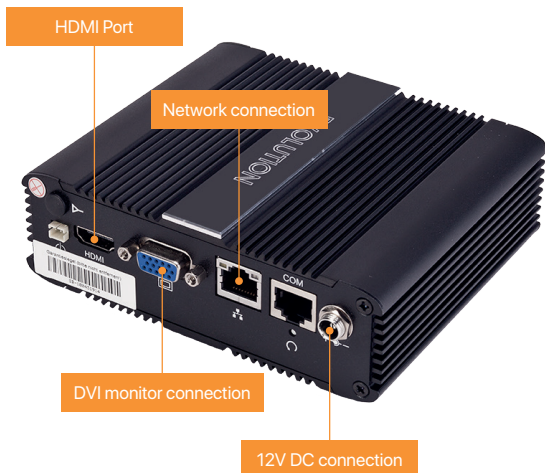
1 What you get



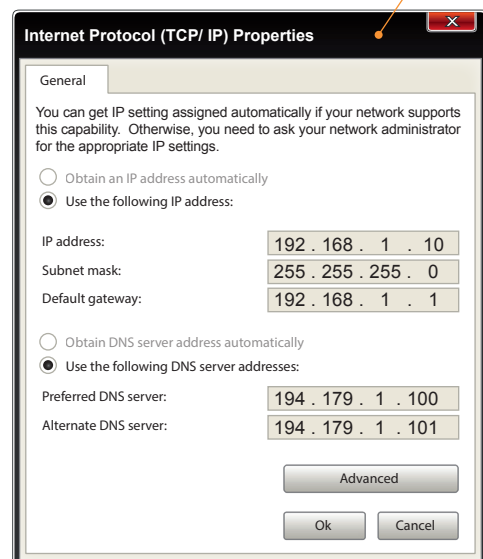
What you need

- ▶ Free IP address in the network
- ▶ Network cable
- ▶ WIN 10 Client PC in the network
- ▶ Access to WIN 10 network settings

2 Connections



3 Remote Setup

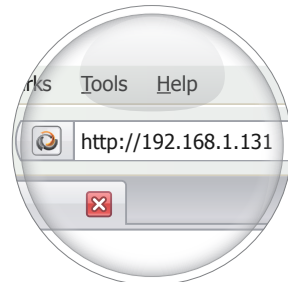


4 Configuration

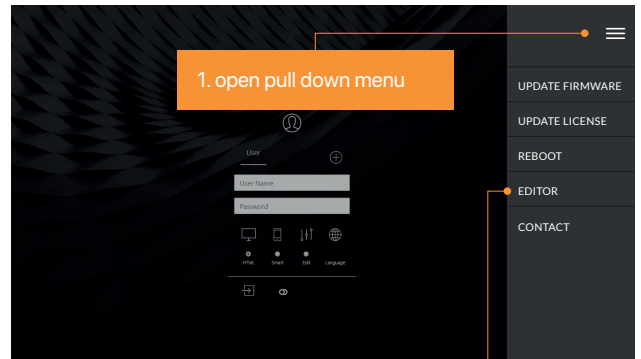
4.1 Switch ON the Evolution



4.2 Open browser in your PC and enter the following IP



4.3 Install connection manager

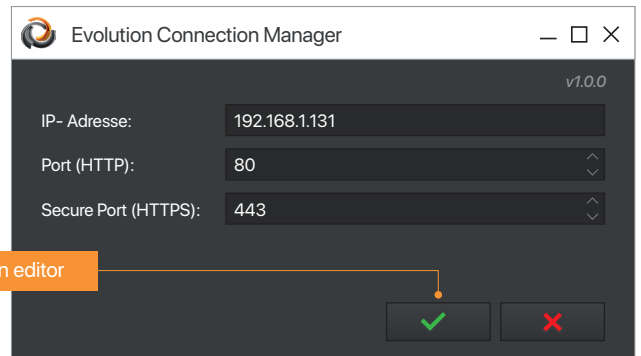


2. Install locally connection manager

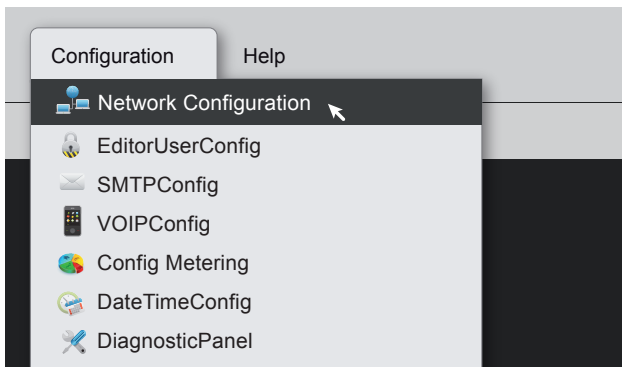
4.4 Start connection manager



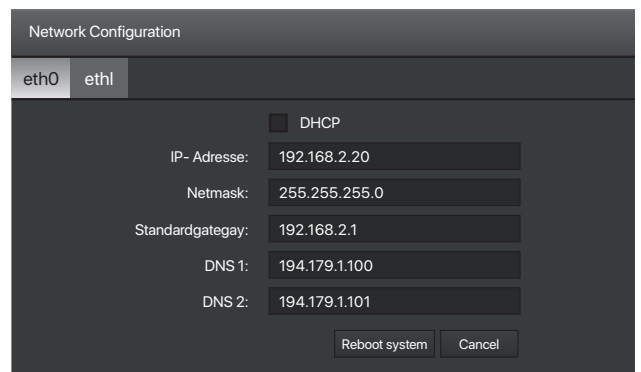
4.5 Start editor and open demo Project



4.6 Set up network connection



4.7 Fill in your own IP configuration



5 Go on and explore...

Congratulation...



FUTURASMUS KNX TEST LAB, S.L.

C/ Capitán Martí. Nº16 Bajo A.
03550 - Sant Joan d'Alacant
Alicante - España
Mov: +34 686 184500
Fax: +34 965 959172
evolution@futurasmus-knxgroup.com